

**GIRLS' SWEET 16 CHAMPIONSHIP**

*First Round*

**WARREN EAST**

**VS.**

**BOYD COUNTY**

**March 25, 1993**

VISITORS (Last Name, First)

NO.	BOYD COUNTY	Tot FG		3-POINT		FT	FTA	Rebounds			PF	TP	A	TO	BLK	S	TIME	
		FG	FGA	FG	FGA			OFF	DEF	TOT								
12	TRIMBLE, CINDY	6	12	0	0	3	6	3	3	6	3	15	0	6	0	1	29:13	
14	ROBERTS, HOLLY	0	1	0	0	0	0	1	1	2	1	0	0	0	0	1	5:59	
53	HOLBROOK, JAMIE	3	7	0	0	0	0	3	6	9	2	6	0	0	0	0	24:47	
03	LUEKEN, KARI	4	12	0	2	0	0	0	0	0	2	8	0	5	0	3	30:15	
04	LUEKEN, LAURA	2	6	0	1	1	2	1	1	2	2	5	11	12	0	2	30:24	
00	KAZEE, BRANDY	0	6	0	2	2	3	4	0	4	3	2	0	1	0	0	14:43	
33	THOMPSON, LORA	3	6	0	0	0	0	2	1	3	1	6	0	0	0	0	7:36	
32	BUTLER, LEXIE	0	0	0	0	0	0	0	0	0	0	0	0	0	0	0	2:30	
21	PHILLIPS, CATHY	0	0	0	0	0	0	0	0	0	1	1	0	0	0	0	8:31	
42	GREENE, MISTI	0	0	0	0	0	0	0	0	0	2	0	0	0	0	0	2:16	
23	ROBBINS, MELISSA	0	1	0	1	0	0	0	1	1	0	0	0	1	0	0	2:47	
31	MOUSER, STACEY	0	0	0	0	0	0	0	0	0	0	0	0	1	0	0	1:45	
05	CRAIG, HOPE	0	0	0	0	0	0	0	0	0	1	0	0	0	0	0	1:36	
30	WOODRUM, ERICA	0	0	0	0	0	0	0	0	0	0	0	0	0	0	0	1:24	
55	WALLACE, APRIL	0	0	0	0	0	0	0	1	1	0	0	0	0	0	0	1:14	
TEAM REBOUNDS (INCLUDED IN TOTALS)								3										
TOTALS		18	51	0	6	7	14	14	17	31	18	43	11	26	0	7	160	
TOTAL FG	1st HALF	7/17	41.2%	2nd HALF	11/34	32.4% GAME		18/51	35.3%	DEADBALL								
3-POINT FG	1st HALF	0/3	0.0%	2nd HALF	0/3	0.0% GAME		0/6	0.0%	REBOUNDS	4							
FREE THROWS	1st HALF	2/2	100.0%	2nd HALF	5/12	41.7% GAME		7/14	50.0%									

HOME (Last Name, First)

NO.	WARREN EAST	Tot FG		3-POINT		FT	FTA	Rebounds			PF	TP	A	TO	BLK	S	TIME	
		FG	FGA	FG	FGA			OFF	DEF	TOT								
03	RATLIFF, DEANNA	3	4	0	1	0	0	0	1	1	4	6	1	2	0	1	13:22	
30	ELPOD, HEATHER	4	5	0	0	1	3	1	3	4	4	8	1	1	0	2	11:23	
42	BRITT, JAMIE	12	18	0	0	5	6	4	3	13	2	29	2	1	0	6	24:18	
12	HODDITT, RHONDA	2	7	0	1	1	2	2	0	2	1	5	1	1	0	4	16:20	
20	MASSEY, MIRANDA	5	8	1	2	0	0	0	0	0	1	11	6	3	0	1	25:30	
44	COLE, TRACY	3	3	0	0	1	2	0	6	6	2	7	1	3	2	0	22:37	
14	SMITH, ALISON	1	2	0	0	0	0	0	2	2	1	2	3	4	0	1	19:49	
54	TALLEY, S.	1	4	0	0	0	0	1	3	4	0	2	2	1	0	0	10:26	
34	FISHBACK, TRESIE	2	4	0	0	0	1	1	2	3	0	4	0	0	0	0	7:06	
32	CROSLIN, NICHOLE	0	0	0	0	0	0	1	2	0	0	0	0	1	0	0	2:47	
50	BARRICK, HOLLY	0	1	0	0	0	0	0	0	0	1	0	0	0	0	0	2:47	
04	CRAIN, APRIL	0	0	0	0	1	2	0	0	0	0	1	0	0	0	0	0:10	
22	LEE, AMANDA	0	1	0	0	0	0	0	0	0	0	0	0	0	0	0	1:45	
10	JOHNSON, LAVONDA	0	0	0	0	1	2	0	0	0	0	1	0	0	0	0	0:25	
24	EADENS, ASHLEY	0	0	0	0	0	0	0	0	0	0	0	0	0	0	0	1:10	
TEAM REBOUNDS (INCLUDED IN TOTALS)								3										
TOTALS		33	62	1	4	10	19	14	24	38	16	77	18	17	2	15	160	
TOTAL FG	1st HALF	11/20	55.0%	2nd HALF	22/42	52.4% GAME		33/62	53.2%	DEADBALL								
3-POINT FG	1st HALF	0/1	0.0%	2nd HALF	1/3	33.3% GAME		1/4	25.0%	Rebounds	5							
FREE THROWS	1st HALF	3/5	60.0%	2nd HALF	7/14	50.0% GAME		10/19	52.6%									

OFFICIALS: THOMAS HUTTON, MARCUS CAMACHO, ALT-L. PETRIE  
 Technicals: None

SCORE BY PERIODS

BOYD COUNTY	16	13	10	4	=	43
WARREN EAST	25	18	16	18	=	77

Attendance: 3,560

COMMENTS: POINTS OFF TURNOVERS

BOYD COUNTY	8	WARREN EAST	33	BOYD COUNTY	8	WARREN EAST	16
-------------	---	-------------	----	-------------	---	-------------	----

BOYD COUNTY "LADY LIONS" vs WARREN EAST "LADY RAIDERS"  
2nd Half Play by Play

Tip off at 9:00 p.m. on 03/25/93 at GIRLS STATE TOURNEY GM 8

Produced by the KHSAA Sweet Sixteen Stat Crew with FINAL III - a Product of LEXICON SF

PAGE : 1

Player	Team	WARREN EAST	Time	Score	BOYD COUNTY	Player	Team
SMITH, ALISON, RATLIFF, DEANNA		MASSEY, MIRANDA, ELROD, HEATHER, BRITT, JAMIE			TRIMBLE, CINDY, ROBERTS, HOLLY, HOLBROOK, JAMIE, LUEKEN, KARI, LUEKEN, LAURA		
2	1	Ball to LADY RAIDERS	3	7:42			
3	2	Foul on BRITT, JAMIE	3	7:41			
		Foul on RATLIFF, DEANNA	3	7:40	43-31* 4 ft Lane Driving by LUEKEN, KARI	2-7	28.5% 13-31 41.9%
					Assist by LUEKEN, LAURA	9	9
9-15	60.0%	19-37 51.3%	3	7:23	*45-31		
1	10	3 ft Lane Jump shot by BRITT, JAMIE					
		Assist by RATLIFF, DEANNA	3	7:22	Foul on TRIMBLE, CINDY	2	1
			3	7:22			
5-6	83.3%	7-11 63.6%	3	7:22	*46-31		
		Sub In: COLE, TRACY Out: RATLIFF, DEANNA	3	6:38	46-33* 10 ft Right Side Jump shot by TRIMBLE, CINDY	5-9	55.5% 14-33 42.4%
		BRITT, JAMIE, 1 Free Throw made	3	6:21	*48-33		
10-16	62.5%	20-39 51.2%	3	6:01	48-35* 2 ft Lane Follow by HOLBROOK, JAMIE	3-6	50.0% 15-36 41.6%
		3 ft Lane Jump shot by BRITT, JAMIE	3	5:43	Foul on HOLBROOK, JAMIE	2	2
1-3	33.3%	8-13 61.5%	3	5:43	*49-35		
		ELROD, HEATHER, 2 Free Throws missed 1st made 2nd	3	5:43	Sub In: BUTLER, LEXIE Out: HOLBROOK, JAMIE		
11-17	64.7%	21-40 52.5%	3	5:29	*51-35		
		2 ft Lane Jump shot by BRITT, JAMIE					
			3	4:50			
		REB: 18 A: 10 BLK: 1 TO: 7 PF: 2			REB: 24 A: 9 BLK: 0 TO: 17 PF: 2		
		S: 11 FT: 8-13 61.5% FG: 21-40 52.5%			S: 4 FT: 5-7 71.4% FG: 15-36 41.6%		
					T I M E - O U T BOYD COUNTY No. 1		
12-18	66.6%	22-41 53.6%	3	4:50	Sub In: THOMPSON, LORA Out: ROBERTS, HOLLY		
2	11	2 ft Lane Jump shot by BRITT, JAMIE	3	4:50	*53-35		
		Assist by SMITH, ALISON					
3-4	75.0%	23-42 54.7%	3	3:36	*55-35		
3	12	14 ft Left Base Line Jump shot by ELROD, HEATHER					
		Assist by MASSEY, MIRANDA	3	3:13			
		Sub In: HIBBITT, RHONDA Out: SMITH, ALISON	3	3:13	Sub In: KAZEE, BRANDY Out: BUTLER, LEXIE		
4-5	80.0%	24-43 55.8%	3	2:44	*57-35		
3	3	Layup Off Fast Break by ELROD, HEATHER	3	2:24			
		Foul on ELROD, HEATHER	3	2:24			
		Sub In: TALLEY, S. Out: BRITT, JAMIE	3	2:23			
			3	2:23	TRIMBLE, CINDY, 2 Free Throws missed both	2-4	50.0% 5-9 55.5%
		Sub In: FISHBACK, TRESIE Out: ELROD, HEATHER	3	2:23			
			3	2:10	Sub In: HOLBROOK, JAMIE Out: THOMPSON, LORA		
1-3	33.3%	25-45 55.5%	3	2:10	57-37* 10 ft Lane Bank by LUEKEN, KARI	3-9	33.3% 16-40 40.0%
		4 ft Lane Follow by FISHBACK, TRESIE	3	1:54	Foul on LUEKEN, KARI	2	3
			3	1:41	*59-37		
			3	1:25	59-39* 21 ft Left Side Jump shot by LUEKEN, KARI	4-10	40.0% 17-41 41.4%
					Assist by LUEKEN, LAURA	10	10
					Foul on LUEKEN, LAURA	2	4
		Sub In: SMITH, ALISON Out: MASSEY, MIRANDA	3	1:14			
2	4	Foul on COLE, TRACY	3	1:14			
			3	0:04			

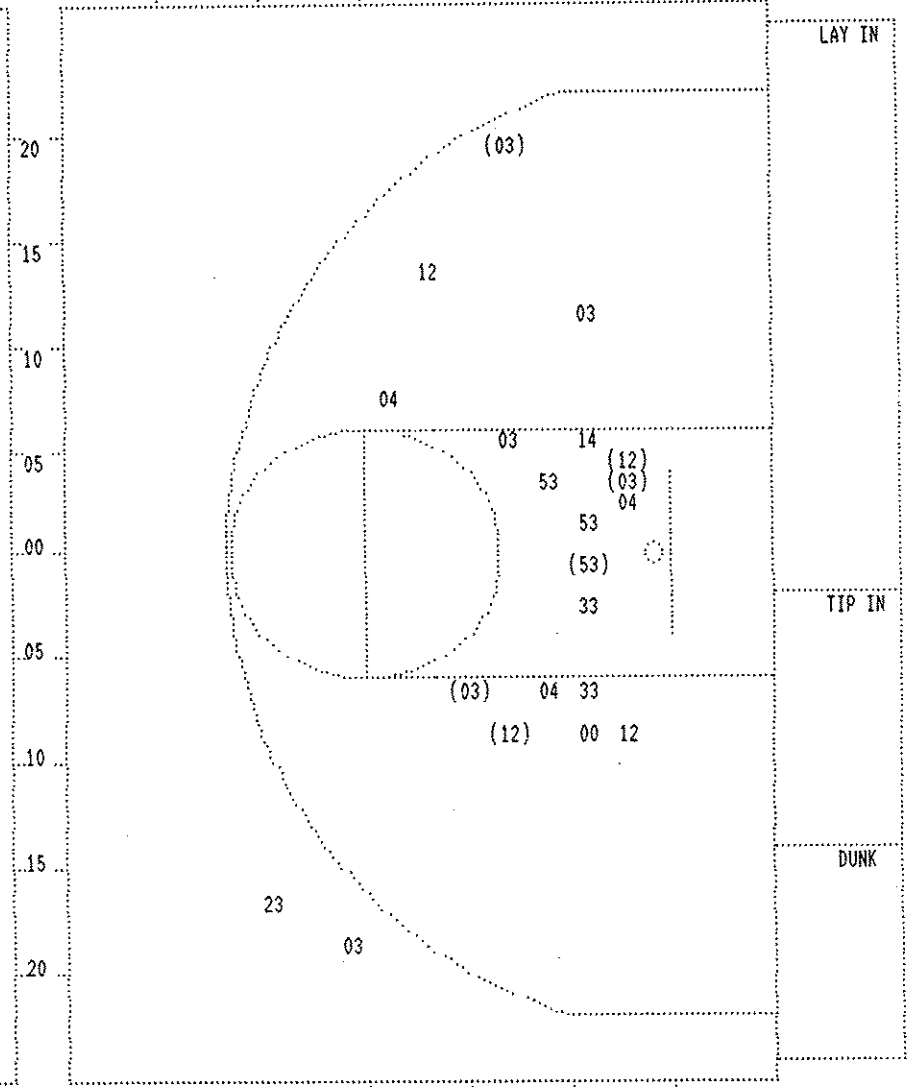
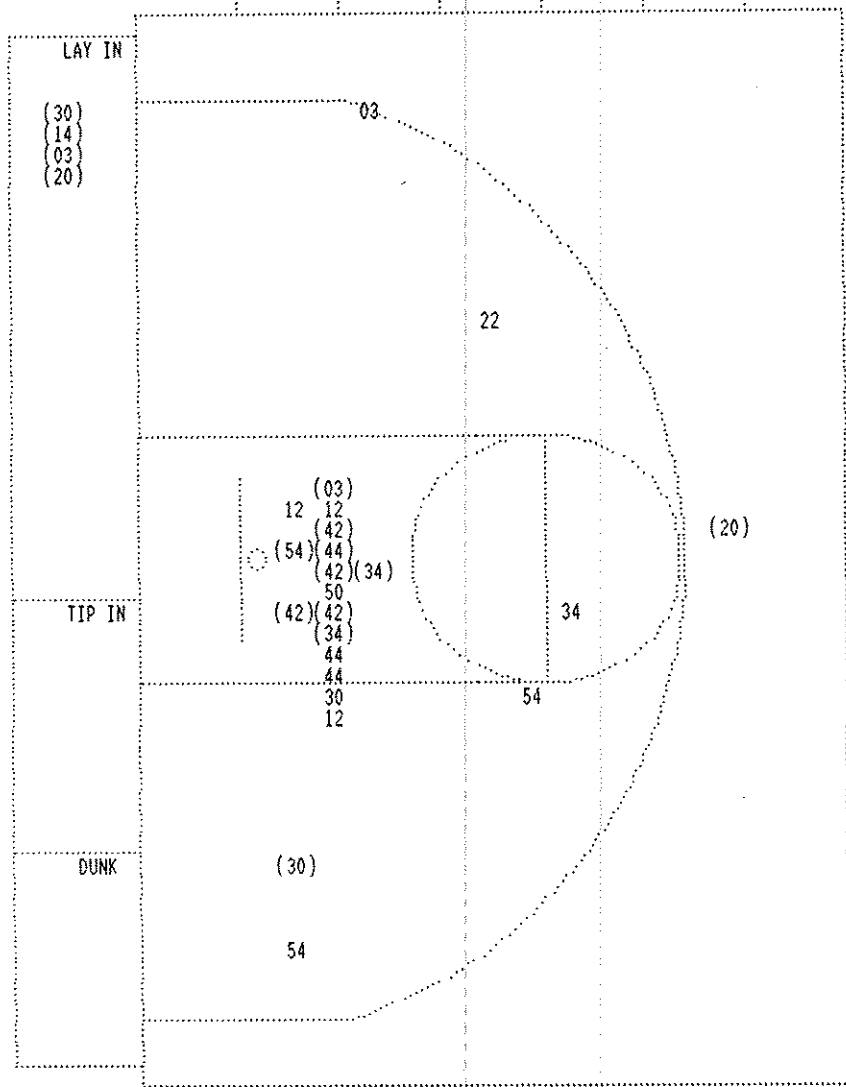
BOYD COUNTY "LADY LIONS" vs WARREN EAST "LADY RAIDERS"  
2nd Half Play by Play

PAGE : 2

Tip off at 9:00 p.m. on 03/25/93 at GIRLS STATE TOURNEY GM 8  
Produced by the KHSAA Sweet Sixteen Stat Crew with FINAL III - a Product of LEXICON SF

Player	Team	WARREN EAST	Time	Score	BOYD COUNTY	Player	Team	
SMITH, ALISON, RATLIFF, DEANNA, MASSEY, MIRANDA, ELROD, HEATHER, BRITT, JAMIE			LUEKEN, KARI, LUEKEN, LAURA, TRIMBLE, CINDY, HOLBROOK, JAMIE, KAZEE, BRANDY					
2-3	66.6%	26-47 55.3%	4	7:50				
		4 ft Lane Jump shot by RATLIFF, DEANNA	4	7:22	*61-39			
		Assist by MASSEY, MIRANDA						
		Foul on ELROD, HEATHER	4	6:56				
		Sub In: COLE, TRACY Out: ELROD, HEATHER	4	6:56				
1-2	50.0%	27-48 56.2%	4	6:56	61-40*	TRIMBLE, CINDY	2 Free Throws missed 1st made 2nd 3-6 50.0% 6-11 54.5%	
		Driving Layup by SMITH, ALISON	4	6:39	*63-40			
		Assist by MASSEY, MIRANDA						
		Foul on MASSEY, MIRANDA	4	6:17				
3-4	75.0%	28-49 57.1%	4	5:45	*65-40			
		Layup Off Fast Break by RATLIFF, DEANNA						
		Assist by SMITH, ALISON						
4-7	57.1%	29-50 58.0%	4	5:28	*67-40			
		Layup Off Fast Break by MASSEY, MIRANDA	4	5:07				
		Foul on RATLIFF, DEANNA	4	5:07				
		Sub In: ELROD, HEATHER Out: RATLIFF, DEANNA	4	4:45				
			4	4:45				
			4	4:45				
3-8	37.5%	30-53 56.6%	4	4:08	*69-40			
		3 ft Lane Bank by COLE, TRACY						
		Assist by MASSEY, MIRANDA						
		Sub In: HIBBITT, RHONDA Out: SMITH, ALISON	4	3:43				
		Sub In: FISHBACK, TRESIE Out: COLE, TRACY	4	3:43				
		Sub In: TALLEY, S. Out: BRITT, JAMIE	4	3:43				
			4	3:40				
			4	3:20	*71-40			
5-8	62.5%	31-56 55.3%	4	3:06	71-42*	4 ft Lane Bank by TRIMBLE, CINDY	6-12 50.0% 18-49 36.7%	
		22 ft Straight Away Jump shot by MASSEY, MIRANDA				Assist by LUEKEN, LAURA	11 11	
		Assist by ELROD, HEATHER						
2-4	50.0%	32-57 56.1%	4	2:48	*73-42			
		4 ft Lane Jump shot by FISHBACK, TRESIE						
		Assist by TALLEY, S.						
		Sub In: CROSLIN, NICHOLE Out: MASSEY, MIRANDA	4	2:47				
		Sub In: BARRICK, HOLLY Out: ELROD, HEATHER	4	2:47				
			4	2:47				
			4	2:47				
0-1	00.0%	8-14 57.1%	4	2:35	*75-42			
		FISHBACK, TRESIE, 1 Free Throw missed						
1-3	33.3%	33-60 55.0%	4	1:45				
		2 ft Lane Follow by TALLEY, S.						
		Sub In: CRAIN, APRIL Out: HIBBITT, RHONDA	4	1:45				
		Sub In: LEE, AMANDA Out: FISHBACK, TRESIE	4	1:45				
			4	1:36				
			4	1:36				
			4	1:36	*76-42			
1-2	50.0%	9-16 56.2%	4	1:35				
		CRAIN, APRIL, 1 & Bonus made 1st missed 2nd						
		Sub In: JOHNSON, LAVONDA Out: CRAIN, APRIL						
		Foul on BARRICK, HOLLY	4	1:25				
			4	1:24				
			4	1:24	76-43*	Sub In: WOODRUM, ERICA Out: GREENE, MISTI		
			4	1:15		PHILLIPS, CATHY, 2 Free Throws made 1st missed 2nd 1-2 50.0% 7-14 50.0%		
			4	1:15		Foul on PHILLIPS, CATHY	1 9	
			4	1:14		Sub In: WALLACE, APRIL Out: PHILLIPS, CATHY		
			4	1:14	*77-43			
1-2	50.0%	10-18 55.5%	4	1:10				
		JOHNSON, LAVONDA, 2 Free Throws made 1st missed 2nd						
			4	1:10		Foul on CRAIG, HOPE	1 10	

SECOND HALF SHOT CHART Produced by the KHSAA Sweet Sixteen Stat Crew with FINAL III - a Product of LEXICON SPORTS™



WARREN EAST					
Player			Player		
03 - RATLIFF, D	2 / 3	66.6%	14 - SMITH, ALI	1 / 1	100.0%
30 - ELROD, HEA	2 / 3	66.6%	22 - LEE, AMAND	0 / 1	0.0%
42 - BRITT, JAM	4 / 4	100.0%	34 - FISHBACK, T	2 / 3	66.6%
12 - HIBBITT, R	0 / 3	0.0%	44 - COLE, TRAC	1 / 3	33.3%
20 - MASSEY, MI	2 / 2	100.0%	50 - BARRICK, H	0 / 1	0.0%
Layups	1-9 Ft	10-15 Ft	Over 15 Ft	3 Pointers	Total
4 / 4	9 / 16	1 / 3	1 / 3	0 / 1	15 / 27
100.0%	56.3%	33.3%	33.3%	0.0%	55.6%

BOYD COUNTY					
Player			Player		
12 - TRIMBLE, C	2 / 4	50.0%	00 - KAZEE, BRA	0 / 1	0.0%
14 - ROBERTS, H	0 / 1	0.0%	23 - ROBBINS, ME	0 / 1	0.0%
53 - HOLBROOK, K	1 / 3	33.3%	33 - THOMPSON, J	0 / 2	0.0%
03 - LUEKEN, KA	3 / 6	50.0%			
04 - LUEKEN, LA	0 / 3	0.0%			
Layups	1-9 Ft	10-15 Ft	Over 15 Ft	3 Pointers	Total
	3 / 13	2 / 4	1 / 2	0 / 2	6 / 21
	23.1%	50.0%	50.0%	0.0%	28.6%

Official Boxscore \* OFFICIAL FIRST HALF \*

Date: 03-25-93 Site: GIRLS STATE TOURNEY GM 8

VISITORS (Last Name, First)

NO.	BOYD COUNTY	Tot FG		3-POINT		FT		Rebounds			PF	TP	A	TO	BLK	S	TIME		
		FG	FGA	FG	FGA	FT	FTA	OFF	DEF	TOT									
12	TRIMBLE, CINDY	4	8	0	0	2	2	3	3	6	1	10	0	4	0	0	16:00		
14	ROBERTS, HOLLY	0	0	0	0	0	0	1	0	1	1	0	0	0	0	0	2:49		
53	HOLBROOK, JAMIE	2	4	0	0	0	1	1	4	5	1	4	0	0	0	0	16:00		
03	LUEREN, KARI	1	6	0	1	0	0	0	0	0	1	2	0	3	0	2	16:00		
04	LUEREN, LAURA	2	3	0	1	1	2	0	1	1	1	5	8	7	0	1	16:00		
00	KAZEE, BRANDY	0	5	0	2	2	2	3	0	3	2	2	0	0	0	0	8:15		
33	THOMPSON, LORA	3	4	0	0	0	0	1	1	2	1	6	0	0	0	0	4:56		
TEAM REBOUNDS (INCLUDED IN TOTALS)								9											
TOTALS		12	30	0	4	5	7	9	11	20	8	29	8	14	0	3	80		
TOTAL FG 1st HALF		7/17	41.2%	2nd HALF		5/13	38.5% GAME			12/30	40.0%	DEADBALL							
3-POINT FG 1st HALF		0/3	0.0%	2nd HALF		0/1	0.0% GAME			0/4	0.0%	REBOUNDS				1			
FREE THROWS 1st HALF		2/2	100.0%	2nd HALF		3/5	60.0% GAME			5/7	71.4%								

HOME (Last Name, First)

NO.	WARREN EAST	Tot FG		3-POINT		FT		Rebounds			PF	TP	A	TO	BLK	S	TIME		
		FG	FGA	FG	FGA	FT	FTA	OFF	DEF	TOT									
03	RATLIFF, DEANNA	1	1	0	0	0	0	0	1	1	2	2	0	2	0	1	9:29		
30	ELROD, HEATHER	2	2	0	0	0	1	0	0	0	2	4	0	0	0	1	2:49		
42	BRITT, JAMIE	8	14	0	0	4	5	4	5	9	1	20	2	0	0	3	14:24		
12	HIBBITT, RHONDA	2	4	0	1	1	2	0	0	0	1	5	1	0	0	3	11:09		
20	MASSEY, MIRANDA	3	6	1	2	0	0	0	0	0	0	7	2	1	0	0	13:31		
44	COLE, TRACY	2	5	0	0	1	2	0	3	3	1	5	1	2	1	0	12:02		
14	SMITH, ALISON	0	1	0	0	0	0	0	1	1	1	0	1	1	0	1	9:31		
54	TALLEY, S.	0	1	0	0	0	0	0	0	0	0	0	1	0	0	0	4:20		
34	FISHBACK, TRESIE	0	1	0	0	0	0	0	1	1	0	0	1	0	0	0	2:45		
TEAM REBOUNDS (INCLUDED IN TOTALS)								6											
TOTALS		18	35	1	3	6	10	6	11	17	8	43	9	6	1	9	80		
TOTAL FG 1st HALF		11/20	55.0%	2nd HALF		7/15	46.7% GAME			18/35	51.4%	DEADBALL							
3-POINT FG 1st HALF		0/1	0.0%	2nd HALF		1/2	50.0% GAME			1/3	33.3%	Rebounds				3			
FREE THROWS 1st HALF		3/5	60.0%	2nd HALF		3/5	60.0% GAME			6/10	60.0%								

OFFICIALS: THOMAS HUTTON, MARCUS CAMACHO, ALT-L. PETRIE

SCORE BY PERIODS

Technical: None

BOYD COUNTY	16	13	=	29
WARREN EAST	25	18	=	43

Attendance: 3,560

COMMENTS: POINTS OFF TURNOVERS

SECOND CHANCE POINTS

BOYD COUNTY	6	WARREN EAST	20	BOYD COUNTY	6	WARREN EAST	10
-------------	---	-------------	----	-------------	---	-------------	----

BOYD COUNTY "LADY LIONS" vs WARREN EAST "LADY RAIDERS"  
1st Half Play by Play

Tip off at 9:00 p.m. on 03/25/93 at GIRLS STATE TOURNEY GM 8  
Produced by the KHSAA Sweet Sixteen Stat Crew with FINAL III - a Product of LEXICON

PAGE : 1

Player	Team	WARREN EAST	Time	Score	BOYD COUNTY	Player	Team
RATLIFF, DEANNA, ELROD, HEATHER, BRITT, JAMIE, HIBBITT, RHONDA, MASSEY, MIRANDA			1 7:57	0-2*	TRIMBLE, CINDY, ROBERTS, HOLLY, HOLBROOK, JAMIE, LUEKEN, KARI, LUEKEN, LAURA	Ball to LADY LIONS	
1-1	100%	1-2 50.0%	1 7:21	0-4*	Driving Layup by LUEKEN, LAURA	1-1	100%
1	1	16 ft Right Base Line Jump shot by ELROD, HEATHER	1 7:08	*2-4	18 ft Left Side Jump shot by LUEKEN, LAURA	2-2	100%
		Assist by HIBBITT, RHONDA				1-1	100%
1	1	Foul on ELROD, HEATHER	1 6:49	2-6*	8 ft Lane Turnaround by HOLBROOK, JAMIE	1-1	100%
1	2	Foul on RATLIFF, DEANNA	1 6:13		Assist by LUEKEN, LAURA	1	1
			1 5:57				
2-2	100%	2-2 100%	1 5:57	2-8*	TRIMBLE, CINDY, 2 Free Throws made both	2-2	100%
2-2	100%	2-6 33.3%	1 5:45		Foul on ROBERTS, HOLLY	1	1
		BRITT, JAMIE, 2 Free Throws made both	1 5:45	*4-8			
		Driving Layup by ELROD, HEATHER	1 5:29	*6-8			
			1 5:29		Foul on LUEKEN, LAURA	1	2
0-1	00.0%	2-3 66.6%	1 5:29				
1-5	20.0%	3-8 37.5%	1 5:22	*8-8			
2	3	ELROD, HEATHER, 1 Free Throw missed	1 5:11				
		4 ft Lane Follow by BRITT, JAMIE	1 5:11		Sub In: KAZEE, BRANDY Out: ROBERTS, HOLLY		
		Foul on ELROD, HEATHER	1 4:50	9-10*	2 ft Lane Follow by TRIMBLE, CINDY	1-1	100%
		Sub In: COLE, TRACY Out: ELROD, HEATHER	1 4:44	*10-10			4-6 66.6%
2-6	33.3%	4-10 40.0%	1 4:20	*12-10			
3-7	42.8%	5-11 45.4%	1 4:01	*14-10			
1	2	3 ft Lane Jump shot by BRITT, JAMIE					
1-2	50.0%	6-12 50.0%					
		Layup Off Fast Break by HIBBITT, RHONDA					
			1 3:58				
		REB: 5 A: 2 BLK: 0 TO: 0 PF: 3			REB: 4 A: 1 BLK: 0 TO: 3 PF: 2		
		S: 3 FT: 2-3 66.6% FG: 6-12 50.0%			S: 0 FT: 2-2 100% FG: 4-7 57.1%		
		T I M E - O U T BOYD COUNTY No. 1					
		Sub In: SMITH, ALISON Out: HIBBITT, RHONDA	1 3:58				
1-1	100%	7-14 50.0%	1 3:14	*16-10			
1	3	3 ft Lane Jump shot by COLE, TRACY					
		Assist by BRITT, JAMIE					
1-1	100%	8-15 53.3%	1 2:59	*18-10			
2	4	6 ft Lane Jump shot by RATLIFF, DEANNA					
		Assist by BRITT, JAMIE					
			1 2:24	18-12*	2 ft Lane Driving by TRIMBLE, CINDY	2-2	100%
					Assist by LUEKEN, LAURA	2	2
1-2	50.0%	9-16 56.2%	1 2:13	*20-12			
		4 ft Lane Driving by MASSEY, MIRANDA	1 1:40	20-14*	8 ft Right Side Jump shot by TRIMBLE, CINDY	3-3	100%
					Assist by LUEKEN, LAURA	3	3
4-9	44.4%	10-18 55.5%	1 1:29	*22-14			
1	5	2 ft Lane Bank by BRITT, JAMIE					
		Assist by COLE, TRACY					
		Sub In: TALLEY, S. Out: RATLIFF, DEANNA	1 0:58				
		Sub In: HIBBITT, RHONDA Out: MASSEY, MIRANDA	1 0:58				
5-10	50.0%	11-20 55.0%	1 0:21	*24-14			
		2 ft Lane Bank by BRITT, JAMIE	1 0:14	24-16*	Layup Off Fast Break by LUEKEN, KARI	1-4	25.0%
					Assist by LUEKEN, LAURA	4	4
			1 0:05		Foul on KAZEE, BRANDY	1	3
			1 0:05		Sub In: THOMPSON, LORA Out: KAZEE, BRANDY		
			1 0:05				
1-2	50.0%	3-5 60.0%	1 0:05	*25-16			
		Sub In: FISHBACK, TRESIE Out: BRITT, JAMIE					
		COLE, TRACY, 2 Free Throws missed 1st made 2nd					

BOYD COUNTY "LADY LIONS" vs WARREN EAST "LADY RAIDERS"  
1st Half Play by Play

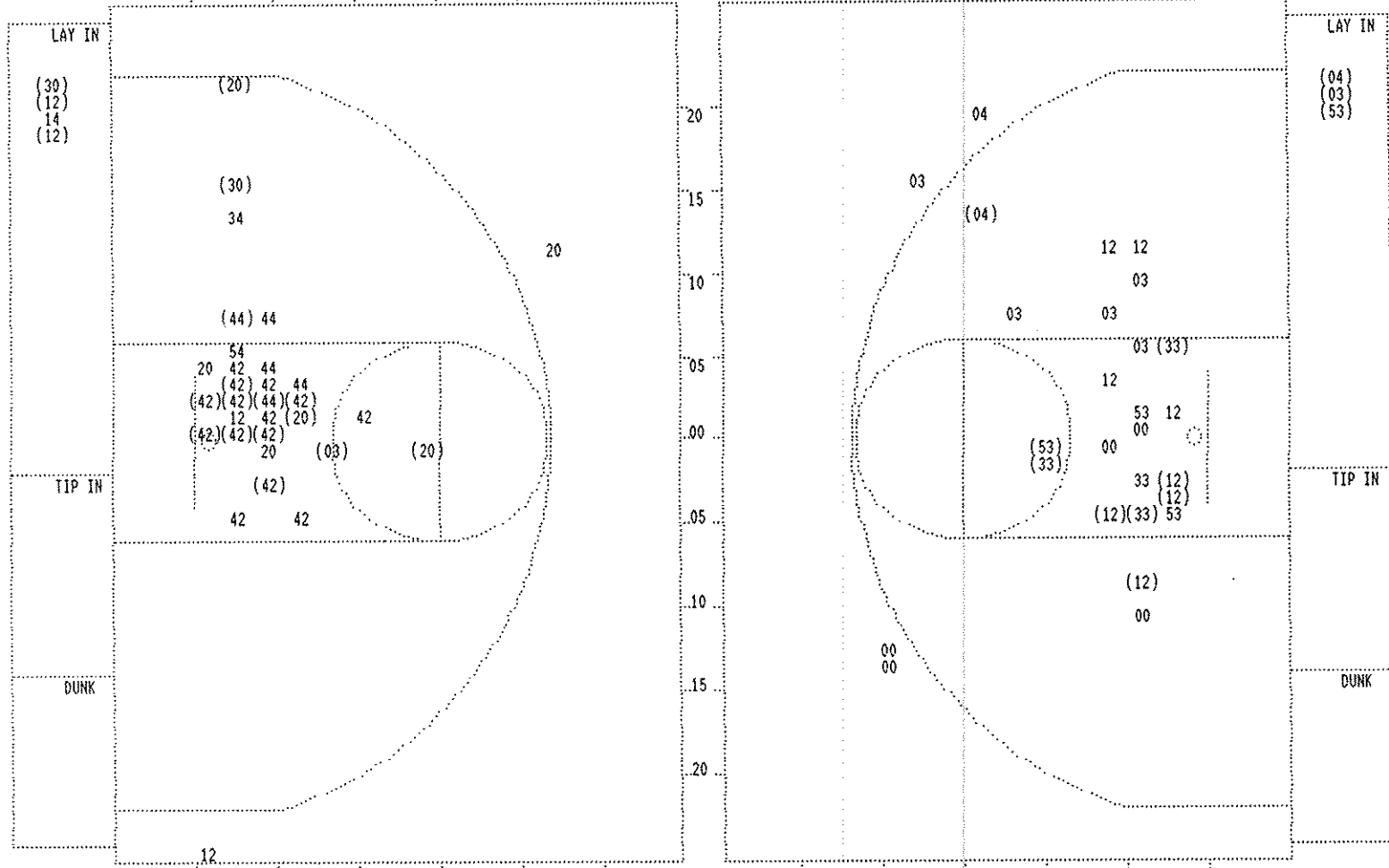
Tip off at 9:00 p.m. on 03/25/93 at GIRLS STATE TOURNEY GM 8  
Produced by the KHSAA Sweet Sixteen Stat Crew with FINAL III - a Product of LEXICON

PAGE : 2

Player	Team	WARREN EAST	Time	Score	BOYD COUNTY	Player	Team
HIBBITT, RHONDA, SMITH, ALISON, FISHBACK, TRESIE, COLE, TRACY, TALLEY, S. Ball to LADY RAIDERS			LUEKEN, KARI, LUEKEN, LAURA, TRIMBLE, CINDY, HOLBROOK, JAMIE, THOMPSON, LORA				
			2 7:28	25-18*	8 ft Lane Jump shot by THOMPSON, LORA Assist by LUEKEN, LAURA	1-1	100% 8-19 42.1%
			2 7:04	25-20*	4 ft Lane Bank by THOMPSON, LORA Assist by LUEKEN, LAURA	2-2	100% 9-20 45.0%
			2 6:29				
		Sub In: MASSEY, MIRANDA Out: HIBBITT, RHONDA Sub In: BRITT, JAMIE Out: FISHBACK, TRESIE	2 6:29				
			2 6:11		Foul on TRIMBLE, CINDY	1	4
2-4	50.0%	12-25 48.0%	2 6:00	*28-20			
1	6	3 pt 22 ft Right Base Line Jump shot by MASSEY, MIRANDA Assist by SMITH, ALISON	2 5:06	28-22*	6 ft Left Base Line Bank by THOMPSON, LORA Assist by LUEKEN, LAURA	3-4	75.0% 10-23 43.4%
3-5	60.0%	13-26 50.0%	2 4:50	*30-22		7	7
1	7	12 ft Lane Jump shot by MASSEY, MIRANDA Assist by TALLEY, S. Sub In: RATLIFF, DEANNA Out: TALLEY, S. Sub In: HIBBITT, RHONDA Out: SMITH, ALISON	2 4:38				
6-12	50.0%	14-27 51.8%	2 4:38				
2	4	3 ft Lane Turnaround by BRITT, JAMIE Assist by MASSEY, MIRANDA	2 4:23				
2-3	66.6%	15-28 53.5%	2 4:04	*32-22			
1	5	Driving Layup by HIBBITT, RHONDA Foul on BRITT, JAMIE	2 3:48	*34-22			
3-4	75.0%	4-7 57.1%	2 3:36				
		BRITT, JAMIE, 2 Free Throws missed 1st made 2nd	2 3:25	34-24*	6 ft Lane Follow by TRIMBLE, CINDY Foul on THOMPSON, LORA Sub In: KAZEE, BRANDY Out: THOMPSON, LORA	4-7	57.1% 11-27 40.7%
2-4	50.0%	16-29 55.1%	2 3:09	*35-24		1	5
2	6	8 ft Right Base Line Jump shot by COLE, TRACY Foul on RATLIFF, DEANNA Sub In: FISHBACK, TRESIE Out: RATLIFF, DEANNA Sub In: SMITH, ALISON Out: COLE, TRACY	2 3:09				
			2 2:56		Foul on HOLBROOK, JAMIE	1	6
7-13	53.8%	17-31 54.8%	2 2:24	*37-24			
1	9	2 ft Lane Jump shot by BRITT, JAMIE Assist by FISHBACK, TRESIE	2 2:11				
1	7	Foul on SMITH, ALISON	2 2:11				
			2 2:10	37-26*	KAZEE, BRANDY, 2 Free Throws made both	2-2	100% 4-4 100%
8-14	57.1%	18-34 52.9%	2 1:33	37-28*	Jump shot Layup by HOLBROOK, JAMIE Assist by LUEKEN, LAURA	2-4	50.0% 12-29 41.3%
4-5	80.0%	5-8 62.5%	2 1:19	*39-28		8	8
1-2	50.0%	6-10 60.0%	2 1:03				
1	8	HIBBITT, RHONDA, 2 Free Throws missed 1st made 2nd Foul on COLE, TRACY	2 1:02	39-29*	LUEKEN, LAURA, 2 Free Throws made 1st missed 2nd	1-2	50.0% 5-6 83.3%
			2 0:47	*41-29			
			2 0:47		Foul on KAZEE, BRANDY	2	7
			2 0:47	*42-29			
			2 0:35		Foul on LUEKEN, KARI	1	8
			2 0:35	*43-29			
			2 0:05				
			2 0:04		HOLBROOK, JAMIE, 1 & Bonus missed 1st	0-1	00.0% 5-7 71.4%



FIRST HALF SHOT CHART Produced by the KHSAA Sweet Sixteen Stat Crew with FINAL III - a Product of LEXICON SPORTS™



WARREN EAST					
Player			Player		Player
03 - RATLIFF, D	1 / 1	100.0%	14 - SMITH, ALI	0 / 1	0.0%
30 - ELROD, HEA	2 / 2	100.0%	34 - FISHBACK, T	0 / 1	0.0%
42 - BRITT, JAH	8 / 14	57.1%	44 - COLE, TRAC	2 / 5	40.0%
12 - HIBBITT, R	2 / 4	50.0%	54 - TALLEY, S.	0 / 1	0.0%
20 - MASSEY, MI	3 / 6	50.0%			
Layups	1-9 Ft	10-15 Ft	Over 15 Ft	3 Pointers	Total
	3 / 4	12 / 25	1 / 2	1 / 3	18 / 35
	75.0%	48.0%	50.0%	100.0%	33.3%
					51.4%

BOYD COUNTY					
Player			Player		Player
12 - TRIMBLE, C	4 / 8	50.0%	33 - THOMPSON,	3 / 4	75.0%
53 - HOLBROOK,	2 / 4	50.0%			
03 - LUEKEN, KA	1 / 6	16.6%			
04 - LUEKEN, LA	2 / 3	66.6%			
00 - KAZEE, BRA	0 / 5	0.0%			
Layups	1-9 Ft	10-15 Ft	Over 15 Ft	3 Pointers	Total
	3 / 3	8 / 17	0 / 5	0 / 0	12 / 30
	100.0%	47.1%	0.0%	100.0%	0.0%
					40.0%